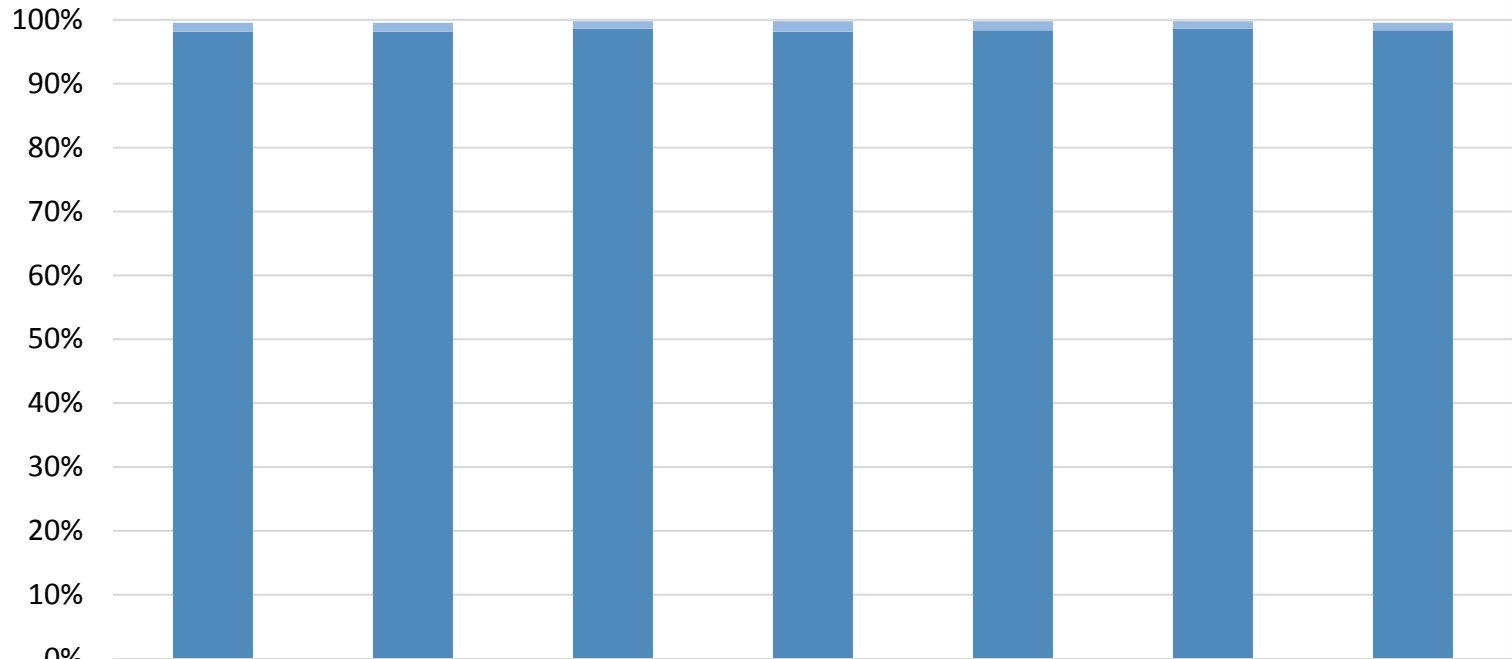


How many kids at Conger Elementary School are vaccinated?*



	DTaP/Tdap	Polio	Varicella	Measles	Mumps/ Rubella	HepB	HepA†
■ % Nonmedical Exemptions	1%	1%	1%	2%	1%	1%	1%
■ % Vaccinated	98%	98%	99%	98%	98%	99%	98%

Number of children at the school**: **425**

Percent of children with no immunization or exemption record: **0%**

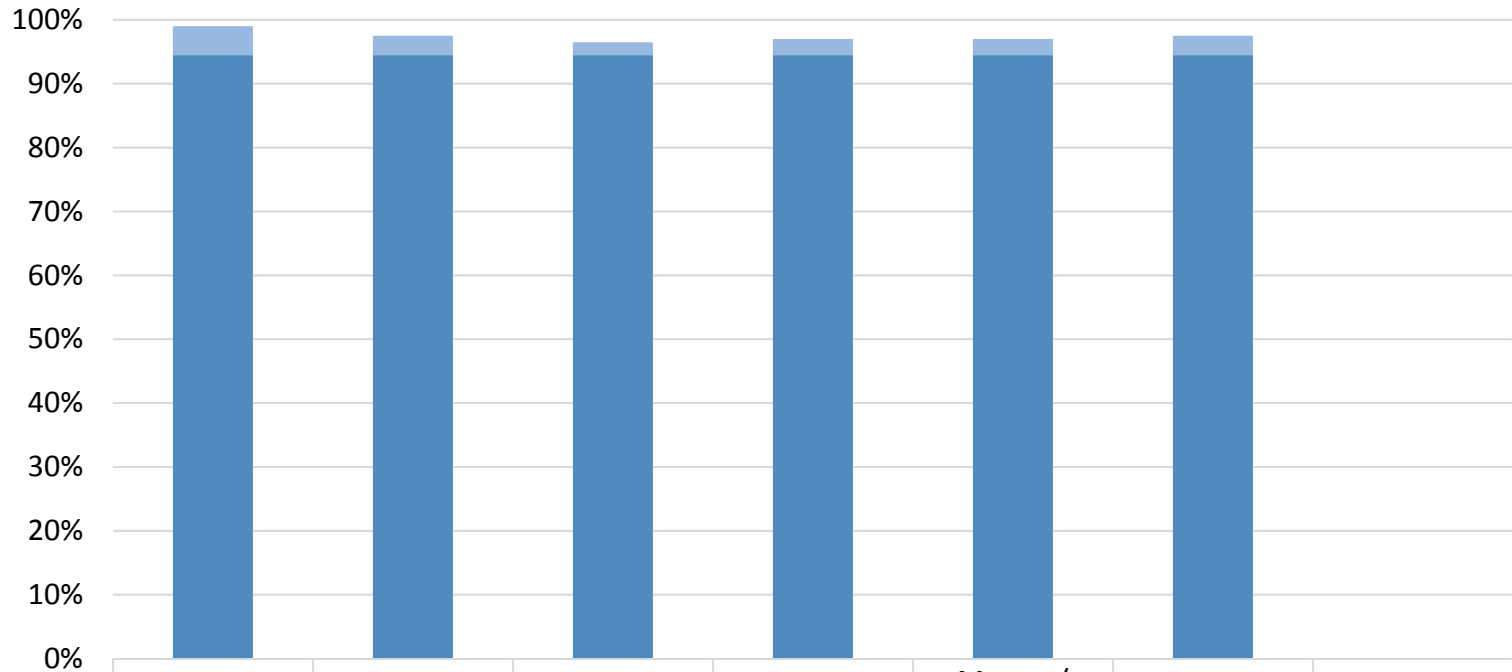
Percent of children with a medical exemption for one or more vaccine(s): **0%**

* Not all immunizations are required for all grades. These numbers may not total 100% if some children have medical exemptions, or are incomplete or in process with immunizations but do not need an exemption because they are on schedule.

There is/are also **0 child(ren) enrolled for whom immunizations are not required to be reported because their records are tracked by another site or they attend fewer than 5 days per year.

†Blanks indicate this vaccine was not required in the grades at this school, or this vaccine was required for fewer than 10 children.

How many kids at Eagle Ridge High School are vaccinated?*



■ % Nonmedical Exemptions	5%	3%	2%	3%	3%	3%	
■ % Vaccinated	94%	94%	94%	94%	94%	94%	

Number of children at the school**: **199**

Percent of children with no immunization or exemption record: **0%**

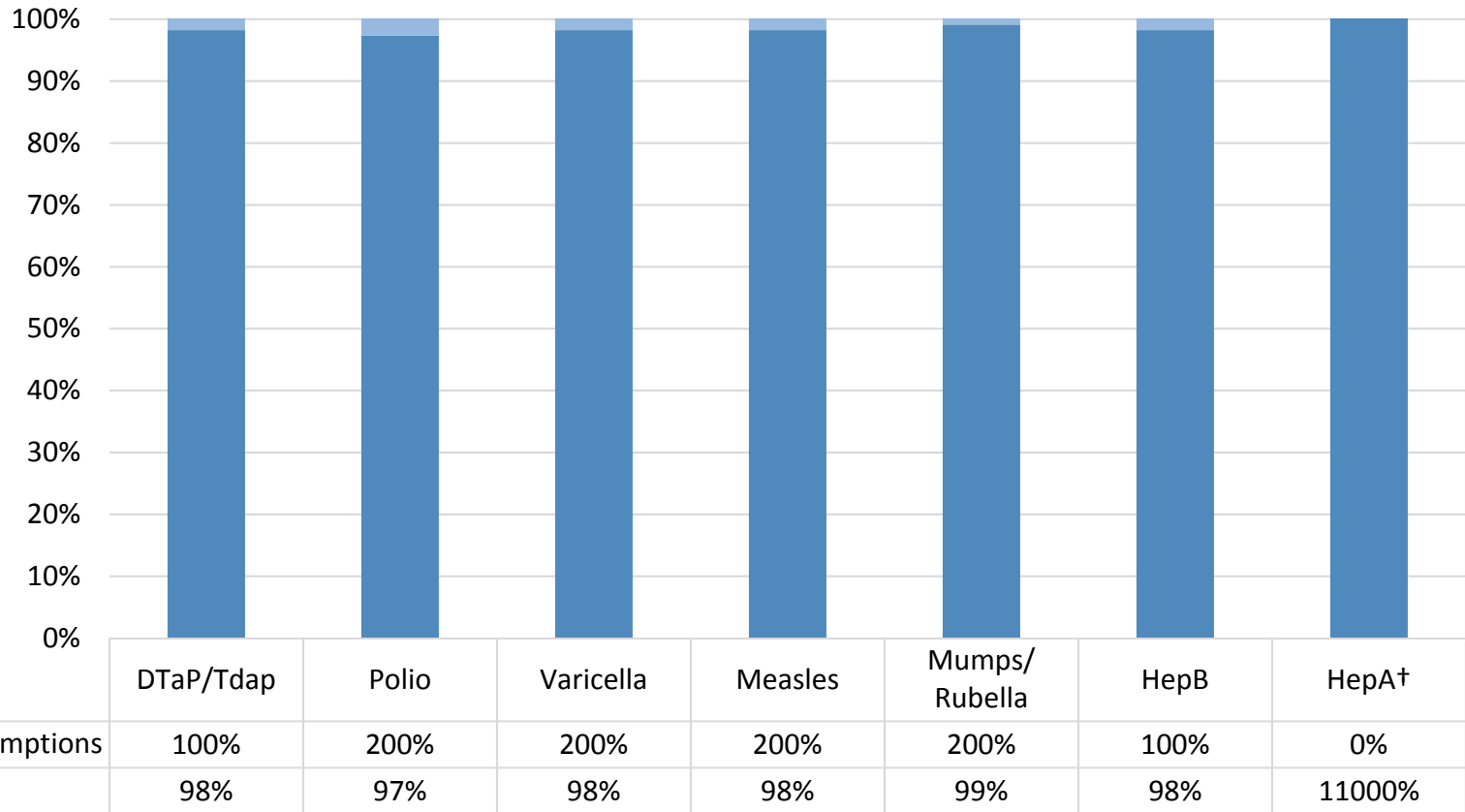
Percent of children with a medical exemption for one or more vaccine(s): **0%**

* Not all immunizations are required for all grades. These numbers may not total 100% if some children have medical exemptions, or are incomplete or in process with immunizations but do not need an exemption because they are on schedule.

There is/are also **0 child(ren) enrolled for whom immunizations are not required to be reported because their records are tracked by another site or they attend fewer than 5 days per year.

†Blanks indicate this vaccine was not required in the grades at this school, or this vaccine was required for fewer than 10 children.

How many kids at Early Childhood Intervention are vaccinated?*



Number of children at the school**: **113**

Percent of children with no immunization or exemption record: **16**

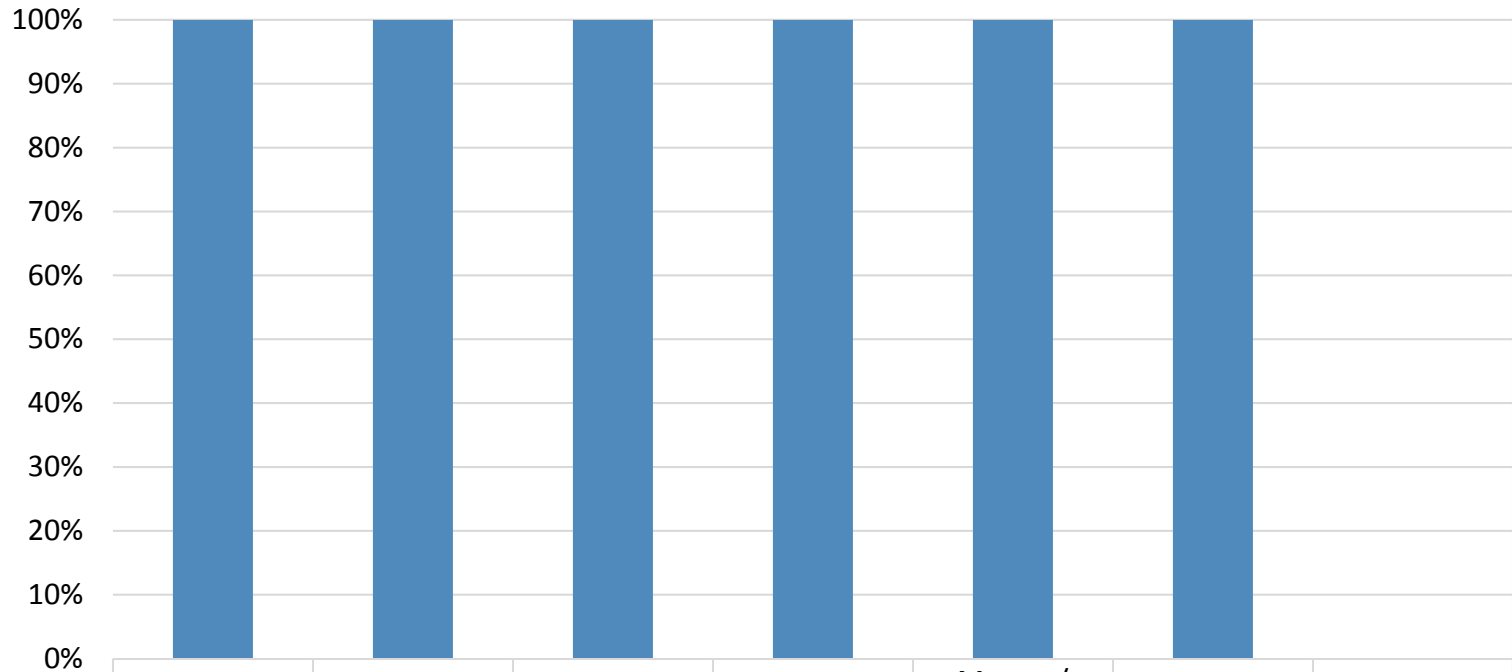
Percent of children with a medical exemption for one or more vaccine(s):

* Not all immunizations are required for all grades. These numbers may not total 100% if some children have medical exemptions, or are incomplete or in process with immunizations but do not need an exemption because they are on schedule.

**There is/are also child(ren) enrolled for whom immunizations are not required to be reported because their records are tracked by another site or they attend fewer than 5 days per year.

†Blanks indicate this vaccine was not required in the grades at this school, or this vaccine was required for fewer than 10 children.

How many kids at Klamath Basin Behavioral Health are vaccinated?*



	DTaP/Tdap	Polio	Varicella	Measles	Mumps/ Rubella	HepB	HepA†
■ % Nonmedical Exemptions	0%	0%	0%	0%	0%	0%	
■ % Vaccinated	100%	100%	100%	100%	100%	100%	

Number of children at the school**: **22**

Percent of children with no immunization or exemption record: **0%**

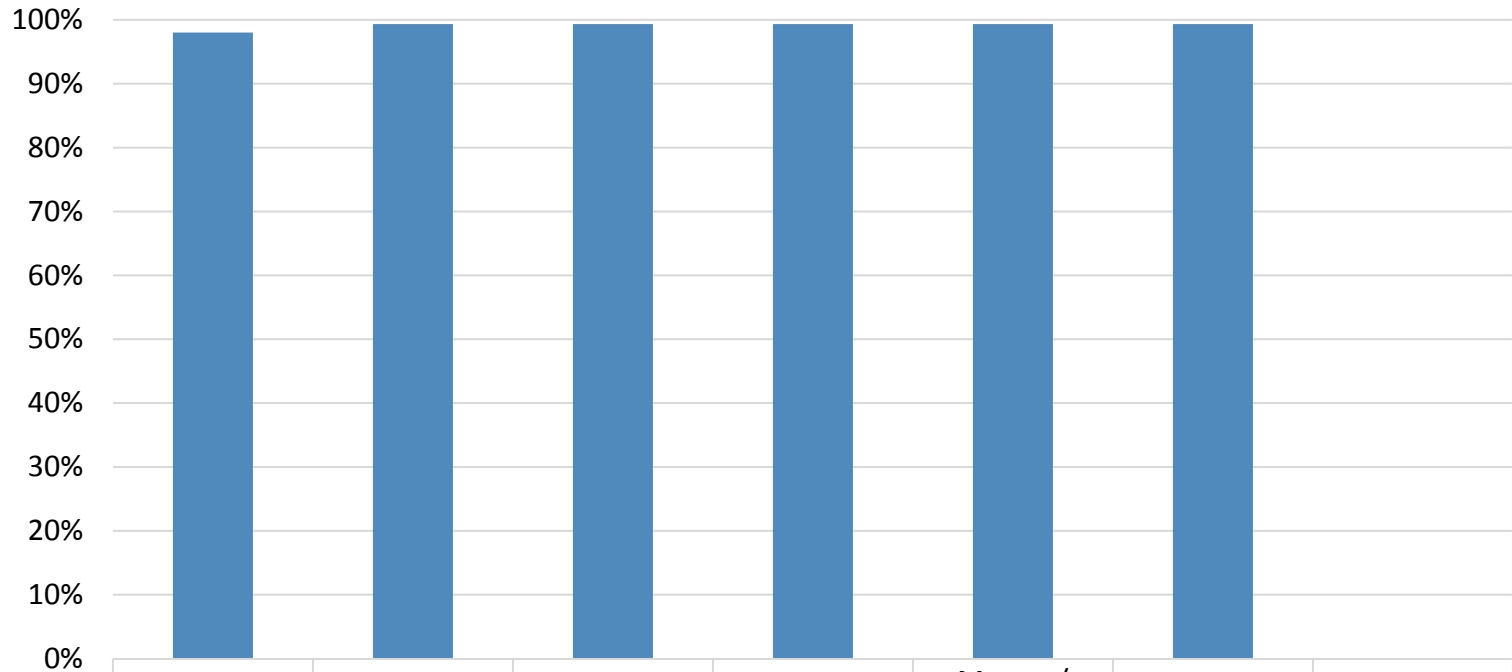
Percent of children with a medical exemption for one or more vaccine(s): **0%**

* Not all immunizations are required for all grades. These numbers may not total 100% if some children have medical exemptions, or are incomplete or in process with immunizations but do not need an exemption because they are on schedule.

There is/are also **0 child(ren) enrolled for whom immunizations are not required to be reported because their records are tracked by another site or they attend fewer than 5 days per year.

†Blanks indicate this vaccine was not required in the grades at this school, or this vaccine was required for fewer than 10 children.

How many kids at Klamath Learning Center are vaccinated?*



	DTaP/Tdap	Polio	Varicella	Measles	Mumps/Rubella	HepB	HepA†
■ % Nonmedical Exemptions	0%	0%	0%	0%	0%	0%	0%
■ % Vaccinated	98%	99%	99%	99%	99%	99%	0%

Number of children at the school**: **149**

Percent of children with no immunization or exemption record: **0%**

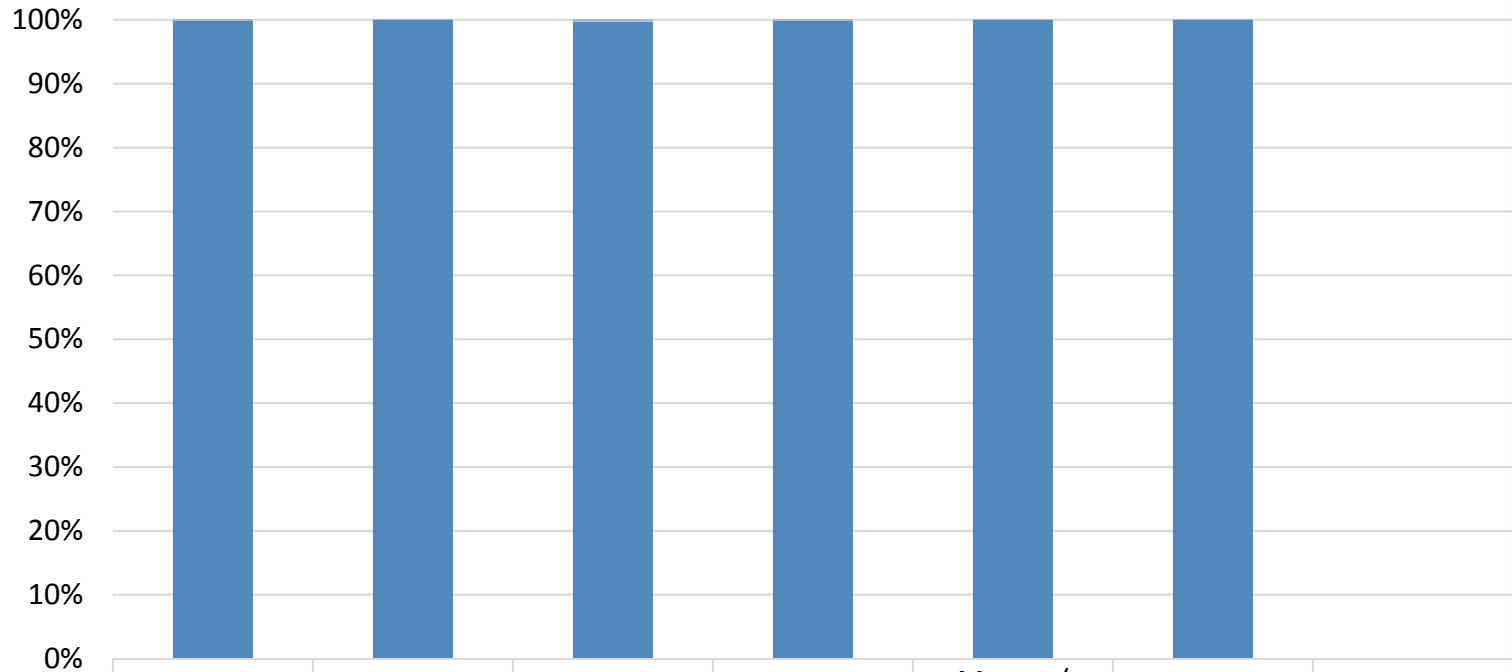
Percent of children with a medical exemption for one or more vaccine(s): **0%**

* Not all immunizations are required for all grades. These numbers may not total 100% if some children have medical exemptions, or are incomplete or in process with immunizations but do not need an exemption because they are on schedule.

There is/are also **0 child(ren) enrolled for whom immunizations are not required to be reported because their records are tracked by another site or they attend fewer than 5 days per year.

†Blanks indicate this vaccine was not required in the grades at this school, or this vaccine was required for fewer than 10 children.

How many kids at Klamath Union High School are vaccinated?*



	DTaP/Tdap	Polio	Varicella	Measles	Mumps/Rubella	HepB	HepA†
■ % Nonmedical Exemptions	2%	2%	2%	2%	2%	2%	
■ % Vaccinated	100%	100%	100%	100%	100%	100%	

Number of children at the school**: **697**

Percent of children with no immunization or exemption record: **0%**

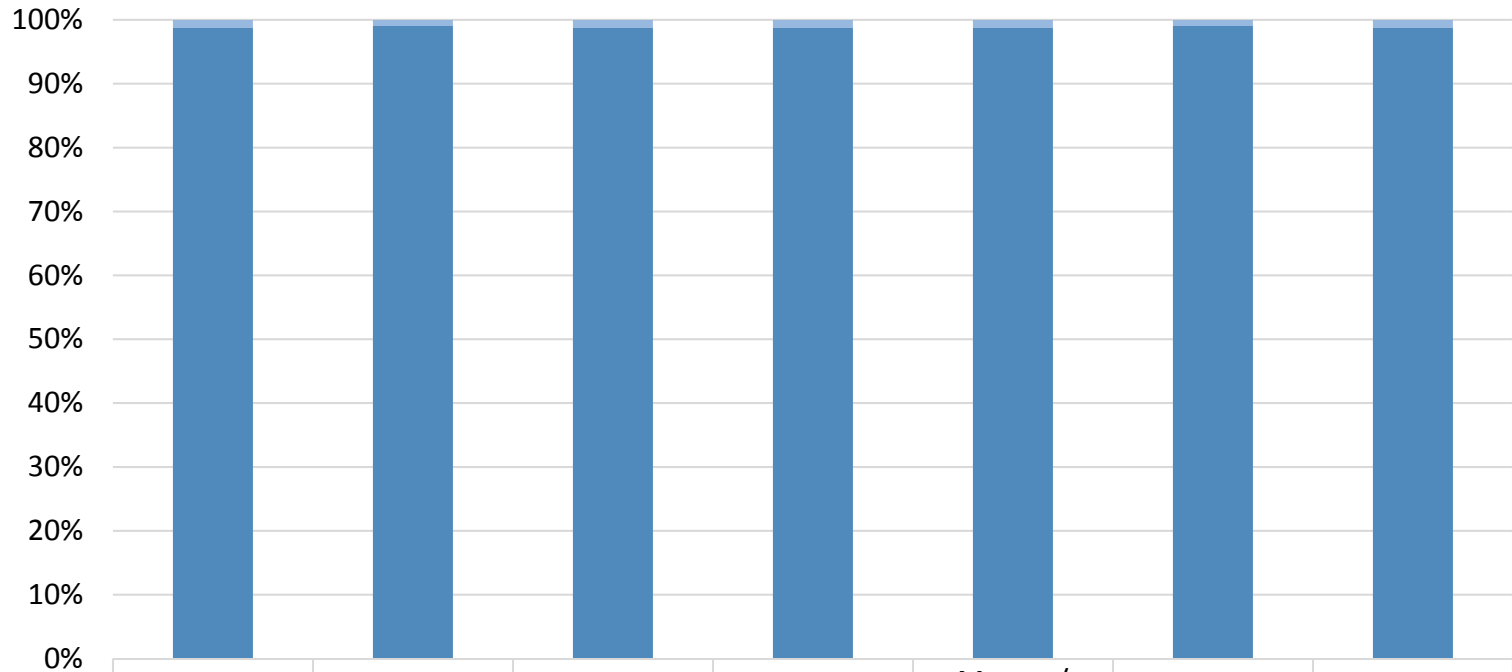
Percent of children with a medical exemption for one or more vaccine(s): **0%**

* Not all immunizations are required for all grades. These numbers may not total 100% if some children have medical exemptions, or are incomplete or in process with immunizations but do not need an exemption because they are on schedule.

There is/are also **37 child(ren) enrolled for whom immunizations are not required to be reported because their records are tracked by another site or they attend fewer than 5 days per year.

†Blanks indicate this vaccine was not required in the grades at this school, or this vaccine was required for fewer than 10 children.

How many kids at Mills Elementary School are vaccinated?*



	DTaP/Tdap	Polio	Varicella	Measles	Mumps/ Rubella	HepB	HepA†
■ % Nonmedical Exemptions	1%	1%	1%	1%	1%	1%	1%
■ % Vaccinated	99%	99%	99%	99%	99%	99%	99%

Number of children at the school**: **415**

Percent of children with no immunization or exemption record: **0%**

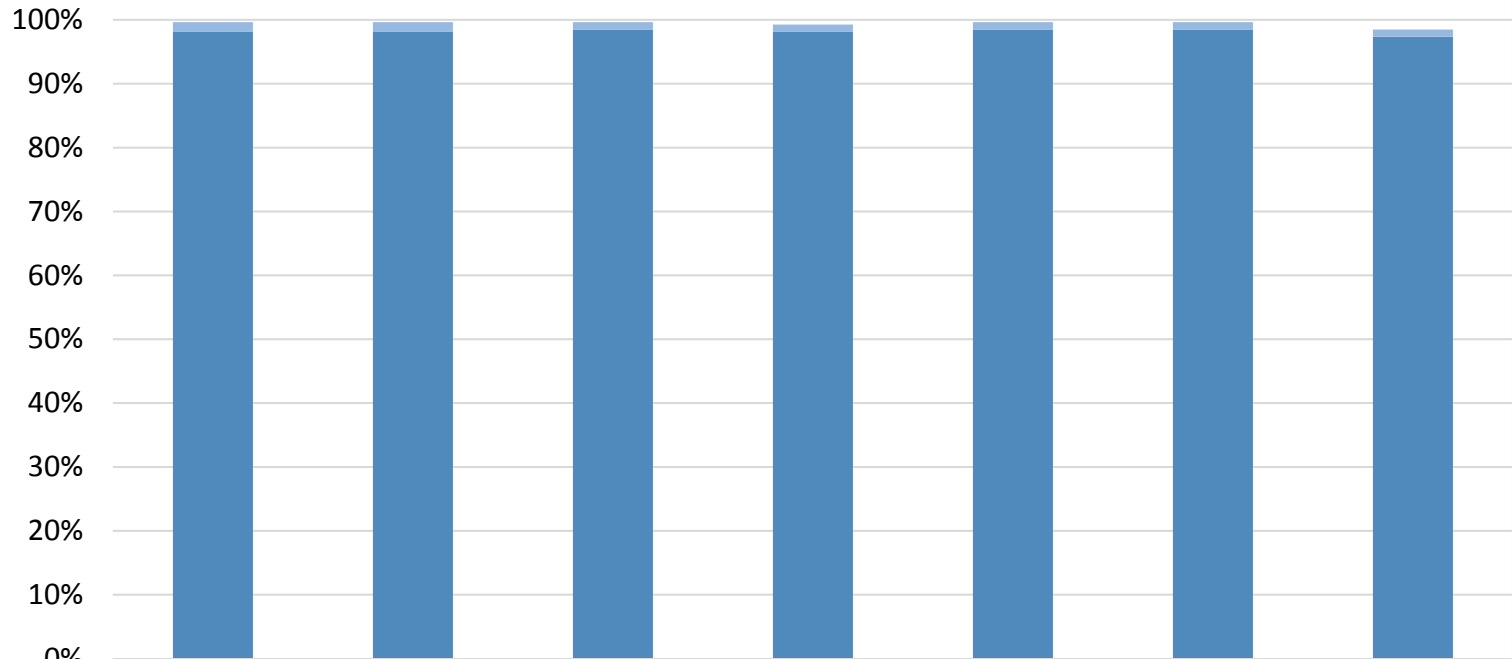
Percent of children with a medical exemption for one or more vaccine(s): **0%**

* Not all immunizations are required for all grades. These numbers may not total 100% if some children have medical exemptions, or are incomplete or in process with immunizations but do not need an exemption because they are on schedule.

There is/are also **0 child(ren) enrolled for whom immunizations are not required to be reported because their records are tracked by another site or they attend fewer than 5 days per year.

†Blanks indicate this vaccine was not required in the grades at this school, or this vaccine was required for fewer than 10 children.

How many kids at Pelican Elementary School are vaccinated?*



■ % Nonmedical Exemptions	2%	2%	1%	1%	1%	1%	1%
■ % Vaccinated	98%	98%	98%	98%	98%	98%	97%

Number of children at the school**: **263**

Percent of children with no immunization or exemption record: **0%**

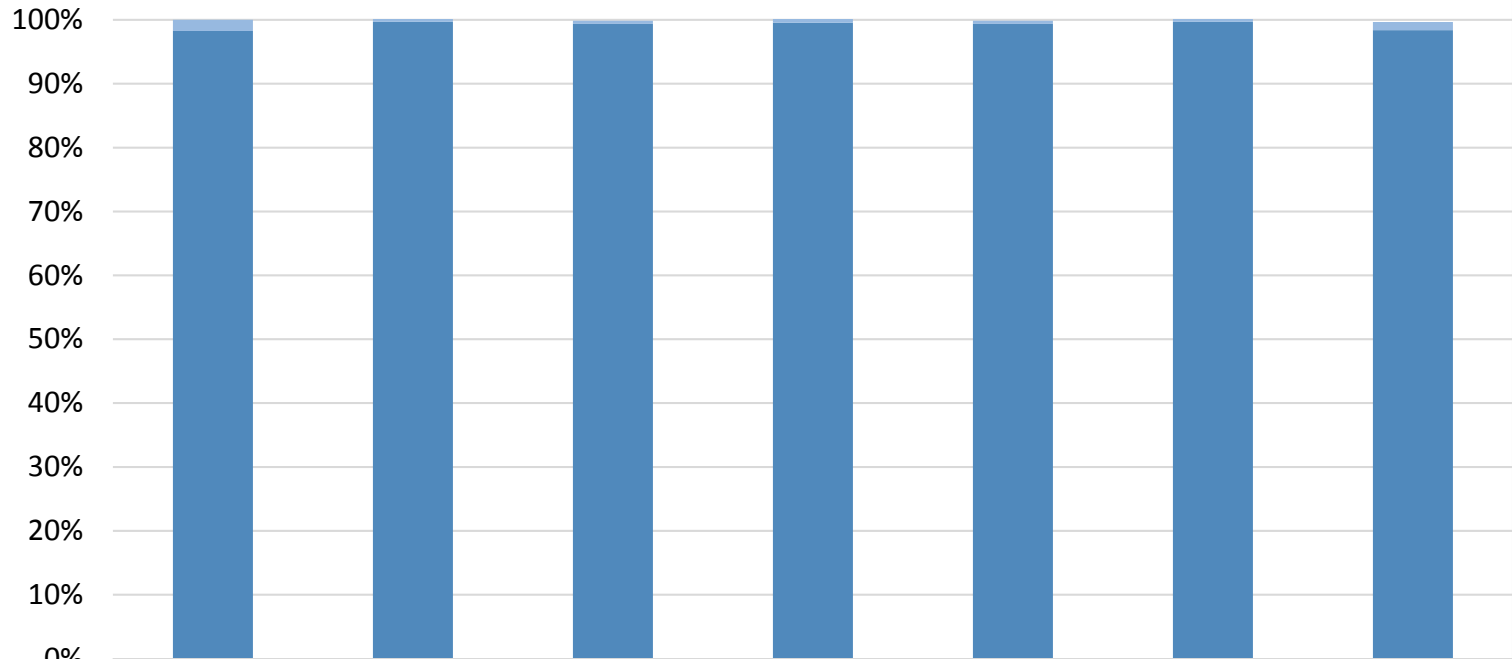
Percent of children with a medical exemption for one or more vaccine(s): **0%**

* Not all immunizations are required for all grades. These numbers may not total 100% if some children have medical exemptions, or are incomplete or in process with immunizations but do not need an exemption because they are on schedule.

There is/are also **0 child(ren) enrolled for whom immunizations are not required to be reported because their records are tracked by another site or they attend fewer than 5 days per year.

†Blanks indicate this vaccine was not required in the grades at this school, or this vaccine was required for fewer than 10 children.

How many kids at PONDEROSA MIDDLE SCHOOL are vaccinated?*



	DTaP/Tdap	Polio	Varicella	Measles	Mumps/ Rubella	HepB	HepA†
■ % Nonmedical Exemptions	2%	1%	0%	1%	0%	0%	1%
■ % Vaccinated	98%	100%	99%	100%	99%	100%	98%

Number of children at the school**: **624**

Percent of children with no immunization or exemption record: **0%**

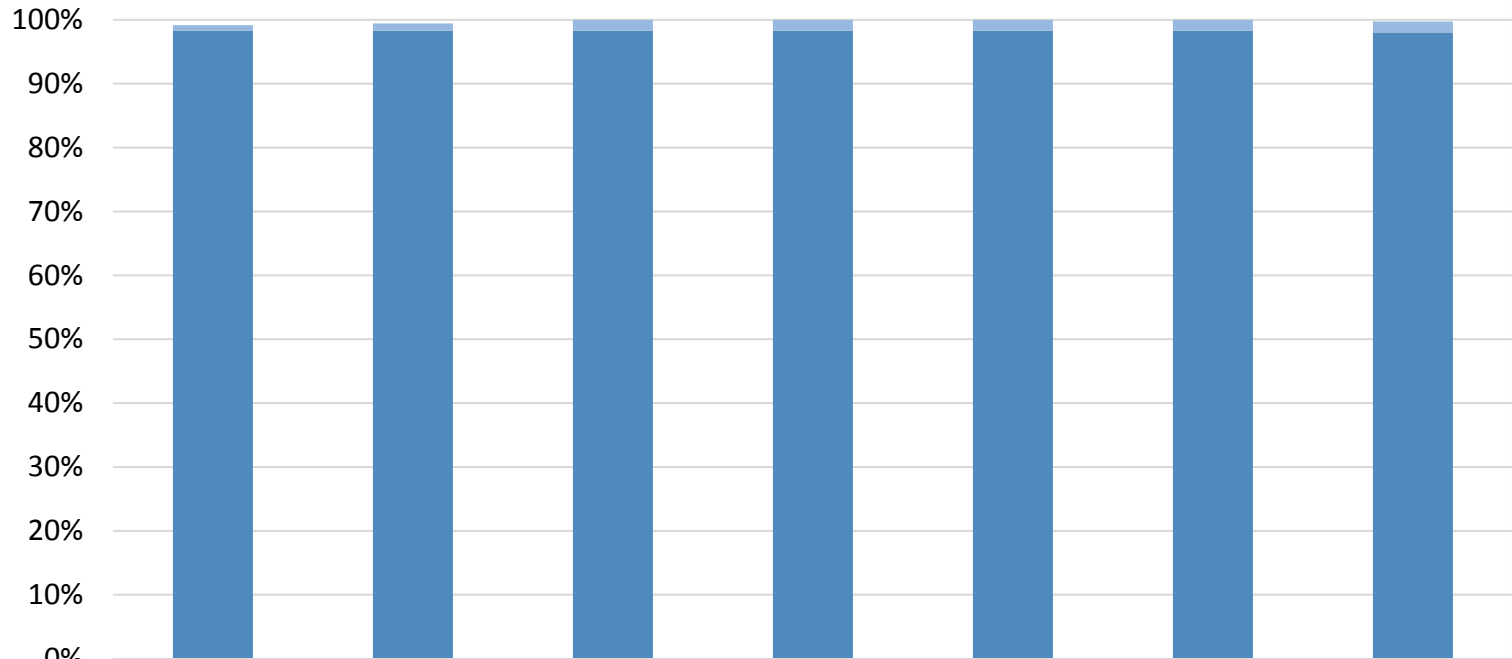
Percent of children with a medical exemption for one or more vaccine(s): **0%**

* Not all immunizations are required for all grades. These numbers may not total 100% if some children have medical exemptions, or are incomplete or in process with immunizations but do not need an exemption because they are on schedule.

There is/are also **0 child(ren) enrolled for whom immunizations are not required to be reported because their records are tracked by another site or they attend fewer than 5 days per year.

†Blanks indicate this vaccine was not required in the grades at this school, or this vaccine was required for fewer than 10 children.

How many kids at Roosevelt Elementary School are vaccinated?*



	DTaP/Tdap	Polio	Varicella	Measles	Mumps/Rubella	HepB	HepA†
% Nonmedical Exemptions	1%	1%	2%	2%	2%	2%	2%
% Vaccinated	98%	98%	98%	98%	98%	98%	98%

Number of children at the school**: **353**

Percent of children with no immunization or exemption record: **0%**

Percent of children with a medical exemption for one or more vaccine(s): **0%**

* Not all immunizations are required for all grades. These numbers may not total 100% if some children have medical exemptions, or are incomplete or in process with immunizations but do not need an exemption because they are on schedule.

There is/are also **0 child(ren) enrolled for whom immunizations are not required to be reported because their records are tracked by another site or they attend fewer than 5 days per year.

†Blanks indicate this vaccine was not required in the grades at this school, or this vaccine was required for fewer than 10 children.